

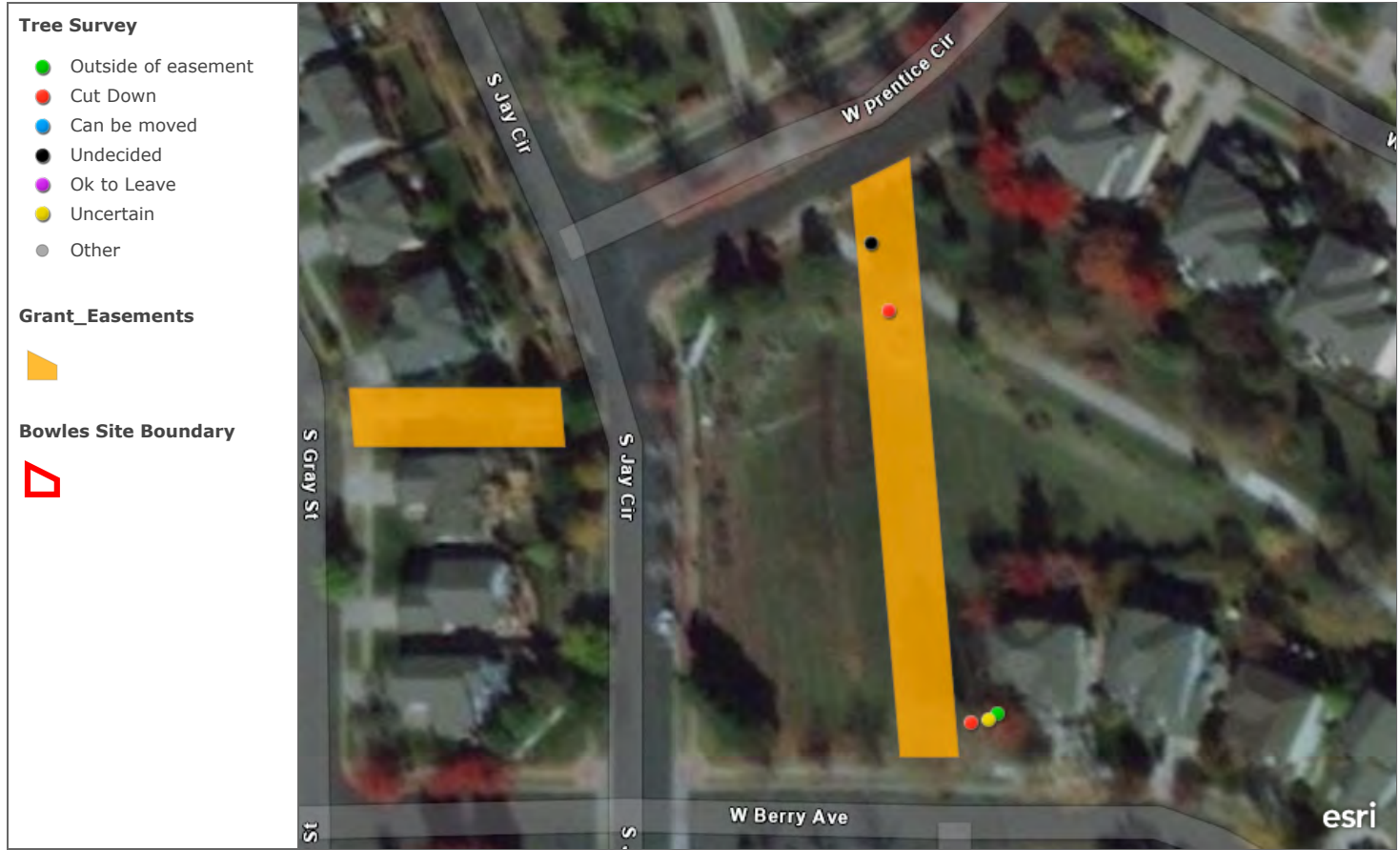
### Primary Map



Primary map to feed primary app. Includes village boundaries, property, bus stops, and parcel information

USDA FSA | Esri Community Maps Contributors, City of Littleton, County and City of Denver, Jefferson County, CO, BuildingFootprintUSA, Esri, HERE, Garmin, SafeGraph, INCREMENT P, METI/NASA, USGS, EPA, NPS, US Census Bureau, USDA

### Primary Map



Primary map to feed primary app. Includes village boundaries, property, bus stops, and parcel information

60ft

Microsoft | Esri Community Maps Contributors, City of Littleton, County and City of Denver, Jefferson County, CO, BuildingFootprintUSA, Esri, HERE, Garmin, SafeGraph, INCREMENT P, METI/NASA, USGS, EPA, NPS, US Census Bureau, USDA

### Primary Map



Primary map to feed primary app. Includes village boundaries, property, bus stops, and parcel information

Microsoft | Esri Community Maps Contributors, City of Littleton, County and City of Denver, Jefferson County, CO, BuildingFootprintUSA, Esri, HERE, Garmin, SafeGraph, INCREMENT P, METI/NASA, USGS, EPA, NPS, US Census Bureau, USDA

### Primary Map



Primary map to feed primary app. Includes village boundaries, property, bus stops, and parcel information

60ft

Microsoft | Esri Community Maps Contributors, City of Lakewood, City of Littleton, County and City of Denver, Jefferson County, CO, BuildingFootprintUSA, Esri, HERE, Garmin, SafeGraph, INCREMENT P, METI/NASA, USGS, EPA, NPS, US Census Bureau, USDA

### Primary Map



Primary map to feed primary app. Includes village boundaries, property, bus stops, and parcel information

Microsoft | Esri Community Maps Contributors, City of Littleton, County and City of Denver, Jefferson County, CO, BuildingFootprintUSA, Esri, HERE, Garmin, SafeGraph, INCREMENT P, METI/NASA, USGS, EPA, NPS, US Census Bureau, USDA

### Primary Map



Primary map to feed primary app. Includes village boundaries, property, bus stops, and parcel information

200ft

Microsoft | Esri Community Maps Contributors, City of Littleton, County and City of Denver, Jefferson County, CO, BuildingFootprintUSA, Esri, HERE, Garmin, SafeGraph, INCREMENT P, METI/NASA, USGS, EPA, NPS, US Census Bureau, USDA

## Memorandum

**Date:** 3/4/2020

**To:** Bowles Metropolitan District Board of Directors

**From:** Pat Shannon, District Manager, and Andrew Williams, Assistant District Manager

**RE:** District Manager's Report for March 10, 2020

---

1. Lolly Park Improvements –
  - a. Bench Replacement – Bench replacement parts have been ordered and scheduled for delivery to installer on 03/23. After receiving the parts, the installer will call to set up an installation date.
  - b. Shade Sails – Shade sails have been ordered. American Awning is awaiting final direction from Board before scheduling an installation date.
2. Blue Heron Park Railing Replacement – Homestead painting has received the fully executed contract but has yet to schedule an installation date. Followed up on 3/4 to get an estimated installation date.
3. Blue Heron Park Dredging –The Management team met with Bryan Kohlenberg on 3/3 to walk the pond and talk through the dredging project. Bryan provided some estimates based on his understanding of the ponds specifications. His estimates ranged from \$200,000 to \$350,000 based on time of year, sod replacement, and unforeseen issues.
4. 2020 Fence Staining Project – Homestead is currently prepping the fences in the district with an expectation that painting should start within the next week or two, weather permitting.
5. Interactive Public Mapping Project – A link to the public map was distributed on 3/4, after receiving comments and revisions the Management team will finalize the map and distribute to all relevant parties.
6. Davey Tree Update – Davey Tree confirmed that they removed a dead pine tree from Blue Heron Park, as was noted by Ms. Lindsly at the February meeting. Removal of this tree was specified in Davey's 2020 contract. Johnny Jimenez reported turf damage caused by a truck entering the open space off of Jay Circle. Pat reported this to Derek, who confirmed that this was caused by their truck and will pay for the repair. Derek will discuss with his crew.
7. GWSD Easement Document – The easement document will be provided post-packet to the Board for their review. After review and revisions, the Management team will send to GWSD for their input.
8. Water Rights Statement of Opposition – Wayne Forman filed statements of opposition on behalf of Bowles against water rights applications filed by the Town of Morrison and Grant Properties.

The next steps are for the Water Referee to schedule a status conference and for the applicants to circulate, within the next few months, evidence and an engineering report supporting their applications together with proposed rulings in these cases. We will then have 60-90 days to review this information to see if we still have grounds on which to object to the applications.